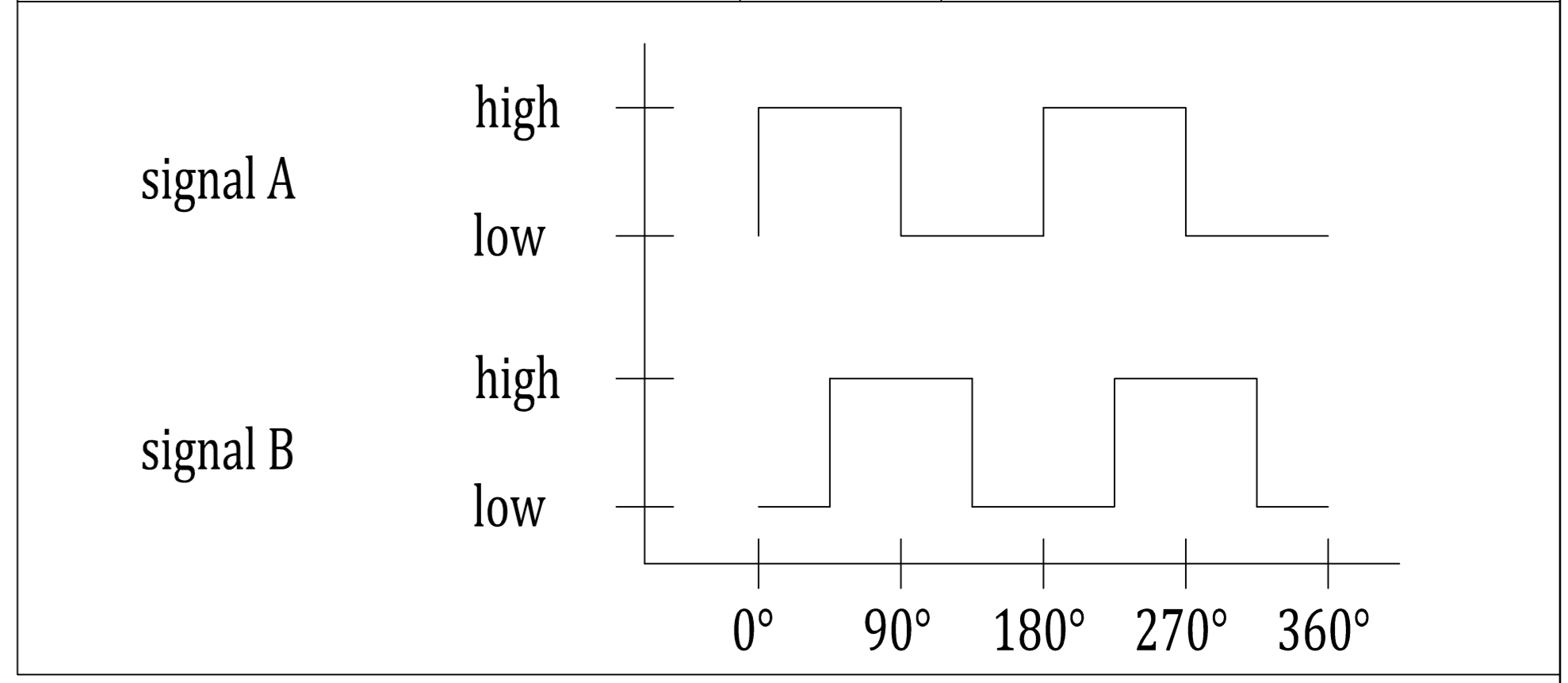
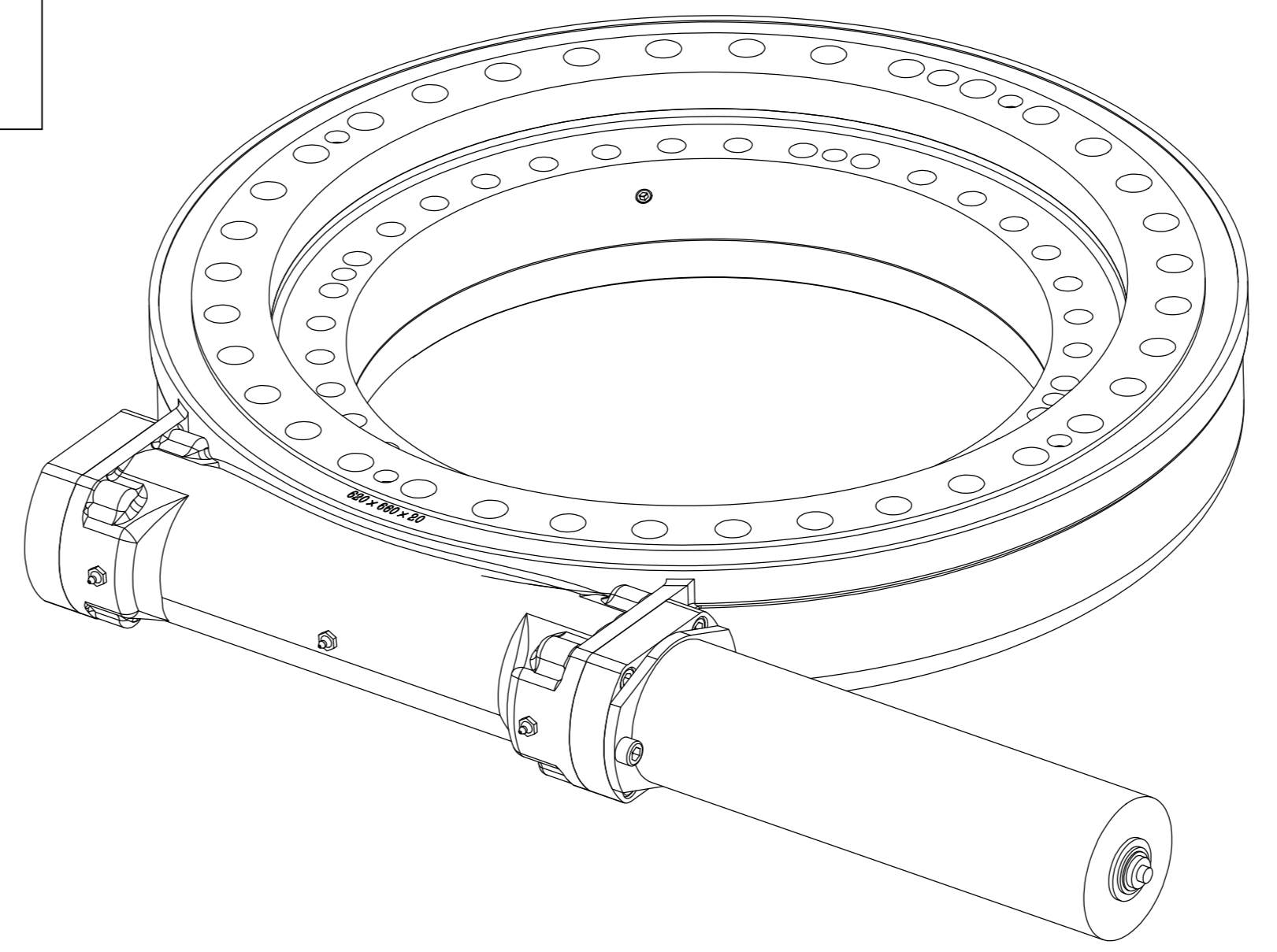


Slewing Drive Performance Parameters	
Rated Output Speed	0.012 rpm
Output Torque	15 kN.m
Tilting Moment (Max.)	203 kN.m
Holding Torque	105,8 kN.m
Static Axial Rating	1598 kN
Static Radial Rating	640 kN
Dynamic Axial Rating	385 kN
Dynamic Radial Rating	335 kN
Gear Ratio	125 : 1
Efficiency	40 %
Precision	≤ 0.15 °
24VDC Motor Performance Data(24H/15/300)	
Rated Output Torque	300 N.m
Rated Output Speed	1.5 rpm
IP Class	IP 65
Rated Current	≤6.5A
Temperature	-40 - +60°C

Wire Define	
Pin 1 (black)	motor -
Pin 2 (red)	motor +
Pin 3 (black thin)	hall -
Pin 4 (red thin)	hall +
Pin 5 (green)	hall A
Pin 6 (yellow)	hall B
Pin E (yellow green)	GND

MAGNETIC PULSE GENERATOR DATA		
Output type	-	voltage output
pull-up resistor	-	yes
Output signal	-	2 square wave signals
Phase quadrature	-	90 °
Impulses per revolution	ppr	2,channels A and B
Operating voltage	VDC	DC5-24
Operating current	mA	max. 12
Deviation of pulse width	-	max. 15 °
Deviation of phase shift	-	max. 15 °
Output voltage(low level)	VDC	max. 0.4 (20mA)
SIGNAL RISE TIME	ns	85
SIGNAL DECAY TIME	ns	60
Operation temperature	°C	-40 - +85



www.pivexin-tech.pl

ALL PROPRIETARY RIGHTS IN THE SUBJECT MATTER HERE OF ARE RESERVED, AND NO PERMISSION IS GRANTED OR TO DISCLOSE REPRODUCE THIS PRINT IN WHOLE OR IN PART, ANY OF THE INFORMATION TO OTHERS.	WEIGHT	SCALE	Obrotnica solarna supraBox solar  21C z silnikiem DC 24V IP65
	127 kg	1 : 4	
	SIZE	A3	
SYMBOLS ISO		SHEET	1 / 1